



# MCL - Microchip Laser module

- Microchip laser module MCL-1064-150
- Single mode pulsed laser radiation at 1064 nm
- Pulse duration around 150 ps
- Adjustable repetition rate from single shot to 500 kHz
- Fiber coupled version coming soon

BATOP GmbH

Stockholmer Strasse 14

07747 Jena

Germany

Phone: +49 3641 634009 - 0

URL: <http://www.batop.de>

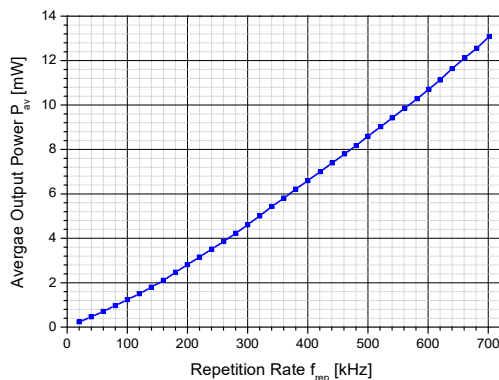
e-mail: [info@batop.de](mailto:info@batop.de)



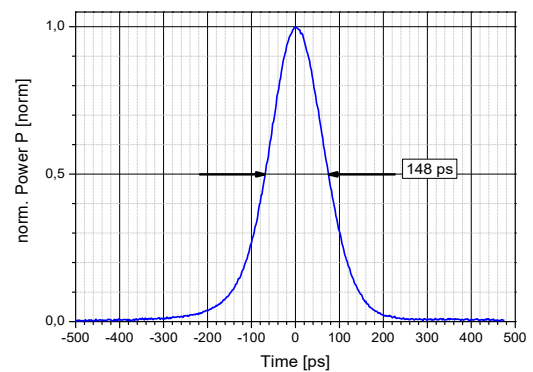
## MCL-1064-150 module description:

- Compact laser module with pulsed laser radiation at 1064 nm
- Adjustable repetition rate up to 500 kHz via USB and control program
- Stand alone mode at preconfigured repetition rate (no software control needed)
- Synchronisation to external clock or pulse on demand possible

## Typical output:



Output power vs. repetition rate

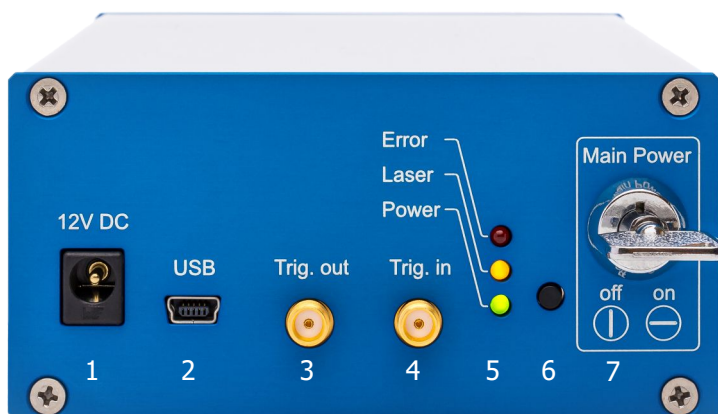


Output pulse

## MCL-1064-150 specifications:

- Laser emission 1064.0 nm  $\pm$  0.2 nm
- Beam divergence 40 mrad
- Beam waist  $\varnothing$  32  $\mu$ m
- M<sup>2</sup> < 1.3
  
- Pulse energy  $\sim$  15 nJ
- Pulse duration  $\sim$  150 ps
- Output power 3 mW @ 200 kHz
- Repetition rate single shot – 500 kHz
- Timing jitter < 2.0 ns @ 200 kHz
  
- dimensions 170 mm x 105 mm x 51 mm
- weight 870 grams
- power supply 12 V = / 3 A

## Front panel description

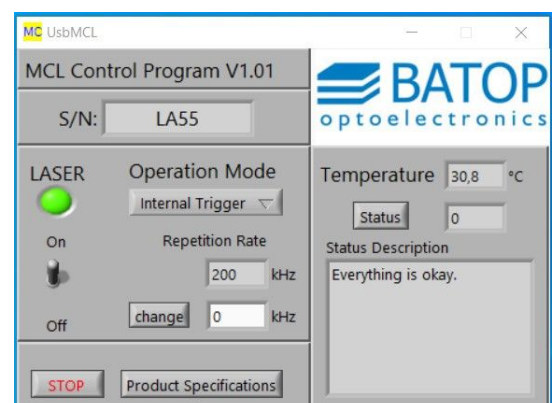


Frontpanel

1. 12V DC power supply
2. USB port
3. SMA connector  $\rightarrow$  pulse output
4. SMA connector  $\rightarrow$  trigger input
5. status LED
6. Switch on /off
7. keylock switch

## Control software:

- Quick start program
  - Switch on /off
  - Change repetition rate
  - Temperature control and status
  - LabVIEW RTE 2016 required
- LabVIEW driver for custom access via USB port



Quick start program