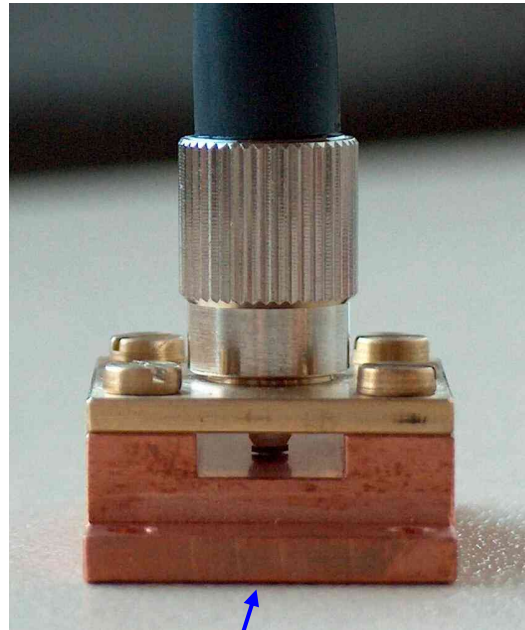


PHS - passive heat sink for fiber coupled SAM

Fibre coupled SAM on passive heat sink



The copper baseplate has to be mounted on a heat sink with a good thermal conductivity.

The SAM chip is fixed on the fiber end. Thermal contact between the SAM and the copper base plate is made with a small amount of a thermal conducting paste. The copper base plate has to be mounted on a heat sink with good thermal conductivity.

Assembly instructions

(note: during shipment the connector of the fiber patch cable is not plugged into the passive heat sink)

1. A small portion of a heat conducting paste should be applied to the lower side of the RSAM chip (e.g. by the use of a utility, like a needle or a similar tool) mounted on the end face of the FC/PC connector. Do not use too much of the conducting paste! For example see figure 2.

This procedure ensures a good thermal conductivity of the SAM chip to the copper heat sink.



Figure 1: SAM chip on FC/PC connector end face



Figure 2: same connector as figure 1 with heat conducting paste

2. Carefully insert the FC/PC plug with the chip in the female connector at the top plate. Smoothly tighten the coupling ring until the chip touches the copper surface of the base plate. Do not over tighten the connector, this may damage the chip!

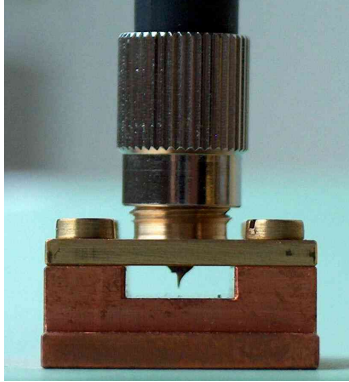


figure 3: FC/PC connector inserted in the passive heat sink

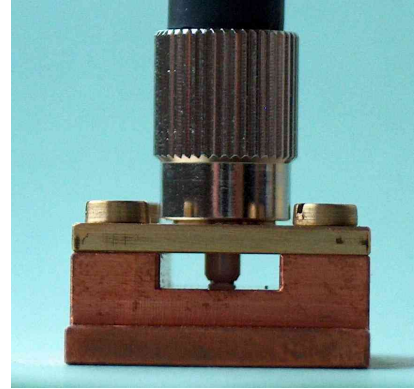
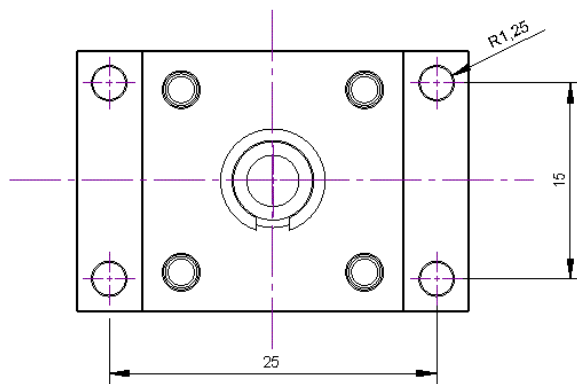
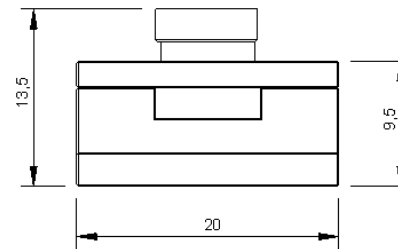
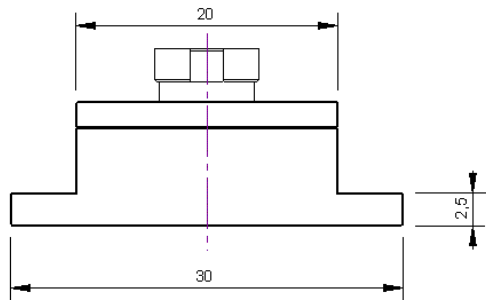
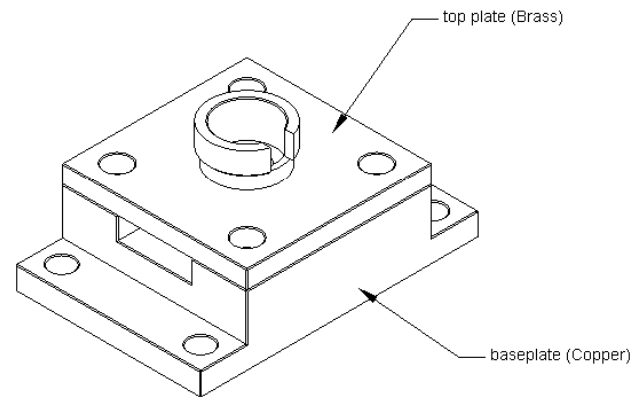


figure 4: the SAM chip is in contact with the base plate, stop tighten the coupling ring

PHS - passive heat sink



chamfer on all edges 0,1mm



For information only. Not for manufacturing purposes.

| Tolerances (tolerance class: fine) | |
|------------------------------------|-----------|
| all dimensions | tolerance |
| 0,05 up to 6 | 0,05 |
| 6 up to 30 | 0,10 |
| All dimensions in Millimeter (mm). | |

| | | | | |
|---|------------|--------------------------------|-------------------|----------|
| Passive_heat_sink | | | | |
| Drawn by | Date | Approved by | Allgemeintoleranz | |
| | 21.09.2017 | | fein | |
| BATOP GmbH Stockholmer Straße 14 07747 Jena Tel: 03641 / 634009-0 E-Mail: info@batop.de | | Passive Heat Sink (PHS) | | |
| Material Copper / Brass | | | Scale | Quantity |
| | | | 2:1 | 1 |