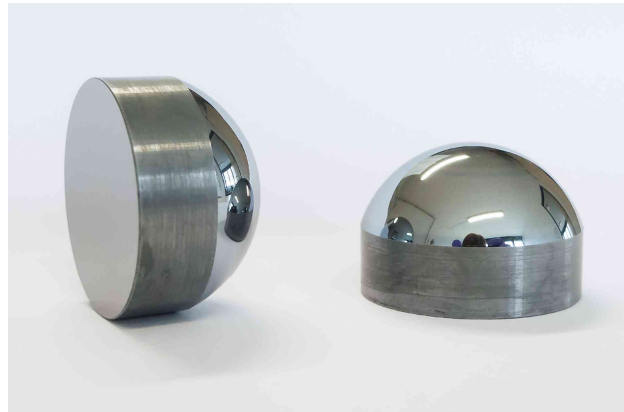


Focusing elliptic Silicon substrate Lens FSL-D20-f50
20 mm diameter, 50 mm focal length

Elliptic focusing silicon lens

material	undoped HRFZ-silicon
specific resistance ρ	>10 k Ω ·cm
refractive index n	3.4
diameter	20 mm
focal length	50 mm
height h	14 mm
distance d	14.6 mm
flat surface	polished
elliptic surface	polished
PCA chip thickness t	0.6 mm

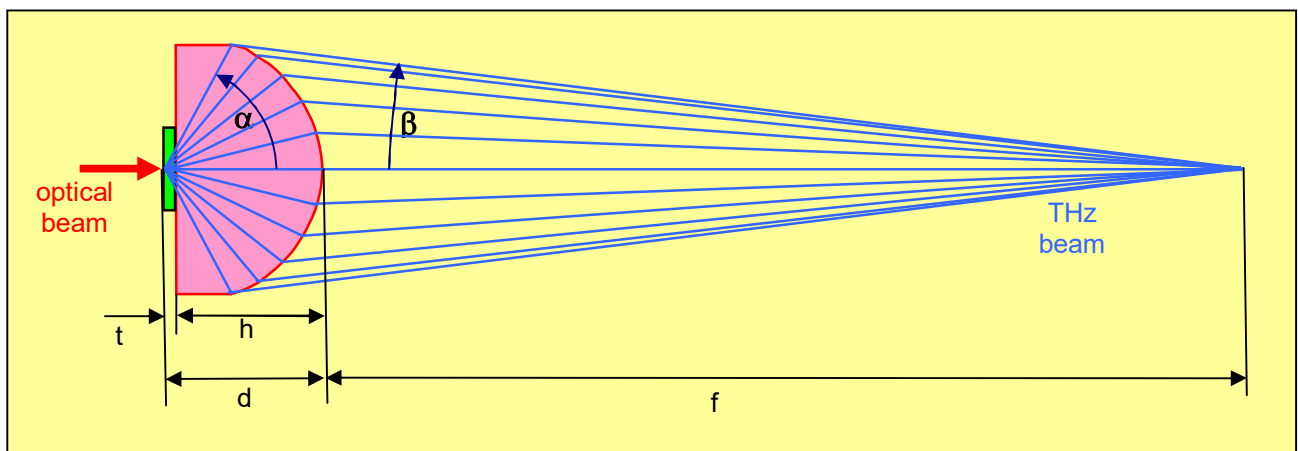


Terahertz beam

focal length f	50 mm
collection angle α	52.7°
convergence angle β	10°

Airy disc diameter

at 300 GHz	3.6 mm
at 1 THz	1.1 mm
at 3 THz	0.36 mm



Patent DE 10 2006 037470 A1