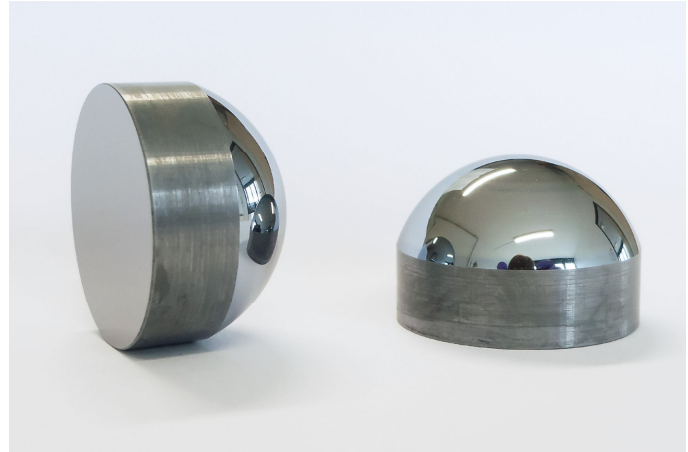


## CL-20 - Collimating elliptic silicon substrate Lens with 20 mm diameter

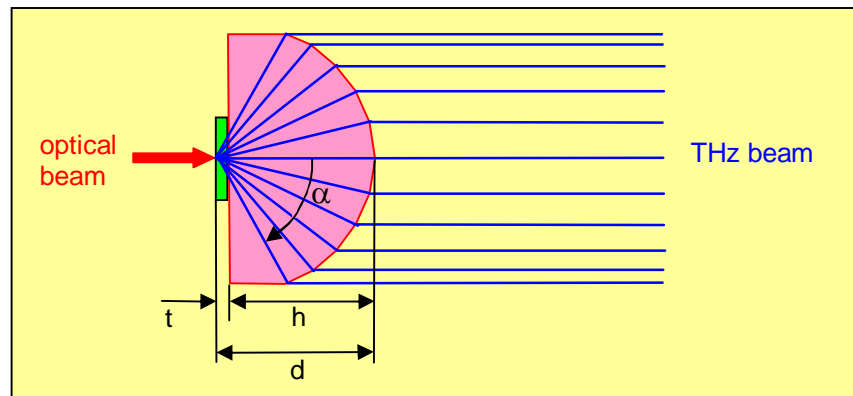
### Elliptic collimating lens

material	undoped HRfZ-silicon
specific resistance $\rho$	>10 k $\Omega$ ·cm
refractive index n	3.41
diameter	20 mm $\pm$ 0.01 mm
height h	13.8 mm $\pm$ 0.01 mm
distance d	14.4 mm
flat surface	polished
elliptic surface	polished
PCA chip thickness t	0.6 mm



### Terahertz beam

collimated with 20 mm diameter  
 collection angle  $\alpha$  54.6°



Patent DE 10 2006 037470 A1